

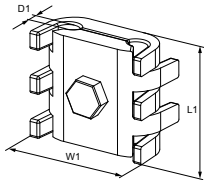


CONNESSIONI A VITE

SCREW CONNECTIONS



MORSETTI UNIVERSALI A PETTINE A 1 BULLONE
UNIVERSAL 1-BOLT COMB LUGS



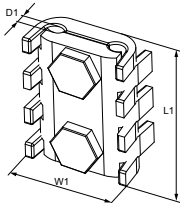
MATERIALE: Ottone pressofuso

MATERIAL: Die-cast brass

Articolo Code	Sezione Section	Diametro cavi Cable clamping range			Vite Screw		
		mm ²	ø mm	D1	W1	L1	
5251	6 ~ 16	3 ~ 5	5	25,5	20,5	M6	100/100
5252	25 ~ 50	6 ~ 8	9	29,5	25	M8	
5253	50 ~ 70	9 ~ 12	12	37,5	30	M8	



MORSETTI UNIVERSALI A PETTINE A 2 BULLONI
UNIVERSAL 2-BOLT COMB LUGS



MATERIALE: Ottone pressofuso

MATERIAL: Die-cast brass

Articolo Code	Sezione Section	Diametro cavi Cable clamping range			Vite Screw		
		mm ²	ø mm	D1	W1	L1	
5261	6 ~ 16	3 ~ 5	5	25	32	M6	100/100
5262	25 ~ 50	6 ~ 8	9	32	38	M6	
5263	50 ~ 70	9 ~ 12	12	42	45	M8	
5264	70 ~ 95	12 ~ 14	14	53	53	M10	25/25
5265	95 ~ 150	14 ~ 16	16	54,5	57,5	M10	20/20
5266	150 ~ 300	16 ~ 22	22	66	67	M12	10/10

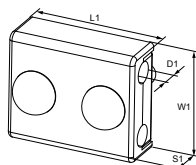


MORSETTI BIFILARI A LOSANGA

TWO-WIRE DIAMOND LUGS

MATERIALE: Ottone pressofuso

MATERIAL: Die-cast brass



Articolo Code	Sezione Section					Vite Screw	
	mm ²	D1	W1	L1	S1		
5211	6	3	19	23	8	M5	100/100
5212	10	4	20	27	9,5	M5	
5213	16	5	24	29,5	10,75	M6	
5214	25	6	27	34,5	11,5	M6	50/50
5215	35	7	30	36	11,5	M6	
5216	40	8	33,5	39,5	14	M8	
5217	50	9	35,5	43	15	M8	25/25
5218	63	10	37,5	47,5	16	M10	
5219	70	11	43,5	53	17,5	M10	
5220	80	12	46,5	56	18	M10	20/20
5221	95	13	46,5	56	18	M10	
5222	120	14	50	58,5	18,5	M10	
5223	135	15	50	58,5	18,5	M10	10/10

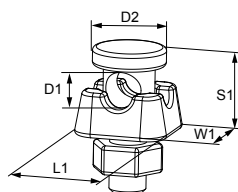



MORSETTI PER MESSA A TERRA

EARTHING LUGS

MATERIALE: Ottone pressofuso

MATERIAL: Die-cast brass



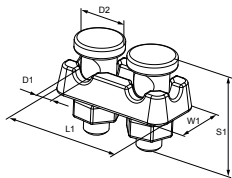
Articolo <i>Code</i>	Sezione <i>Section</i>						Vite <i>Screw</i>	
	mm²	D1	D2	W1	L1	S1		
22	50	10	21	26	26.5	41	M10	100/100



MORSETTI - Lugs



MORSETTI PER MESSA A TERRA
EARTHING LUGS



MATERIALE: Ottone pressofuso

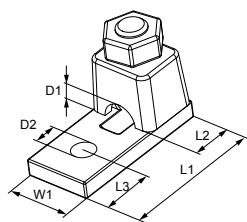
MATERIAL: Die-cast brass

Articolo Code	Sezione Section						Vite Screw	
	mm ²	D1	D2	W1	L1	S1		
23	50	10	21	26	51,5	41	M10	25/50



CAPICORDA A 1 BULLONE

1-BOLT TERMINALS



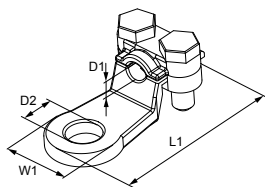
MATERIALE: Ottone pressofuso nichelato

MATERIAL: Nickel-plated die-cast brass

Articolo Code	Sezione Section	Diametro cavi Cable clamping range							Vite Screw	
	mm ²	ø mm	D1	D2	W1	L1	L2	L3		
5160	4 ~ 10	2 ~ 4	4,2	5,25	12	26,5	12	7	M5	100/100
5161	10 ~ 25	4 ~ 6	6,2	6	14	36	11	8	M6	
5162	25 ~ 35	6 ~ 8,5	8,5	6	17	38	12,5	8	M7	
5163	35 ~ 50	8,5 ~ 11	11,5	8,3	23	50	18	12	M10	50/50
5164	70 ~ 95	11 ~ 14	15	10,5	26,5	55	20,5	14,5	M12	25/25
5165	95 ~ 120	14 ~ 17	17,5	11,5	32	64	23	16	M14	25/25
5166	150 ~ 185	17 ~ 20,5	21	14	37,5	79	26	18	M16	20/20
5167	185 ~ 240	20,5 ~ 24	24	17	40	94	31,5	23	M16	10/20

CAPICORDA A 2 BULLONI

2-BOLT TERMINALS

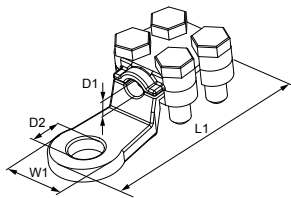


MATERIALE: Ottone pressofuso nichelato

MATERIAL: Nickel-plated die-cast brass

Articolo Code	Sezione Section					Vite Screw	
	mm ²	D1	D2	W1	L1		
5140	10	4	6	15	32,5	M5	100/200
5141	16	5,1	8,5	17	37	M5	200/200
5142	25	6,3	8,5	18,75	42	M5	150/150
5143	35	7,5	10,5	21,5	49	M5	100/100

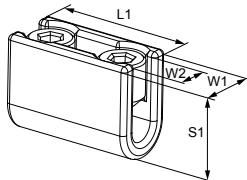
CAPICORDA A 4 BULLONI
4-BOLT TERMINALS



MATERIALE: Ottone pressofuso nichelato **MATERIAL:** Nickel-plated die-cast brass

Articolo Code	Sezione Section					Vite Screw	
	mm ²	D1	D2	W1	L1		
5144	50	9,5	10,5	23	56,5	M6	100/200
5145	75	11	13,25	26	61	M6	
5146	100	13	14,3	29	65	M6	
5147	120	14	14,8	32	71	M6	
5148	170	16	16	33	81	M8	25/25
5149	200	17	17	35	85	M8	
5150	250	18	17	38	87,5	M8	
5151	300	21	19,8	45	118	M10	
5152	400 ~ 500	25,5	22	53	132	M10	10/10
5153	700	34	22	60	150	M10	1/1

CONNETTORI DI TESTA A "U"
"U" HEAD CONNECTORS

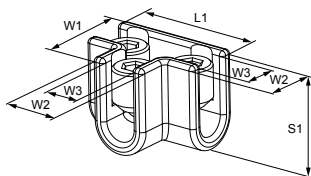


MATERIALE: Ottone pressofuso nichelato **MATERIAL:** Nickel-plated die-cast brass

Articolo Code	Sezione Section	Diametro cavi Cable clamping range					Vite Screw	
	mm ²	ø mm	W1	W2	L1	S1		
2300	4 ~ 16	2 ~ 4,5	10,25	5	23	15,25	M7	100/100
2301	10 ~ 25	3 ~ 6	14	6,5	30	20	M10	
2302	25 ~ 35	7 ~ 8	17	8,25	42	22,5	M12	50/50
2303	35 ~ 70	9 ~ 10	19,5	10,3	51	26	M14	
2304	70 ~ 95	11 ~ 13	27	13,5	71	30	M20	10/10
2305	95 ~ 185	14 ~ 16	31	16	73	38	M24	

CONNETTORI DI TESTA A "T"

"T" HEAD CONNECTORS



MATERIALE: Ottone pressofuso nichelato

MATERIAL: Nickel-plated die-cast brass

Articolo Code	Sezione Section	Diametro cavi Cable clamping range						Vite Screw	
	mm ²	ø mm	W1	W2	W3	L1	S1		
2350	4 ~ 16	2 ~ 4,5	16,75	10,75	5	23	15,5	M7	100/100
2351	10 ~ 25	3 ~ 6	22	13,75	7	30	20	M10	
2352	25 ~ 35	7 ~ 8	31,5	17	8,15	42,5	22,5	M12	50/50
2353	35 ~ 70	9 ~ 10	36	19,5	10	52	25,5	M14	25/50
2354	70 ~ 95	11 ~ 13	50	27	13	71	30	M20	10/10
2355	95 ~ 185	14 ~ 16	53	32	16,25	72	38	M24	